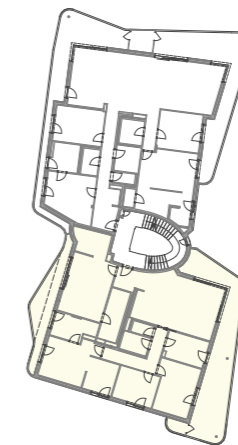
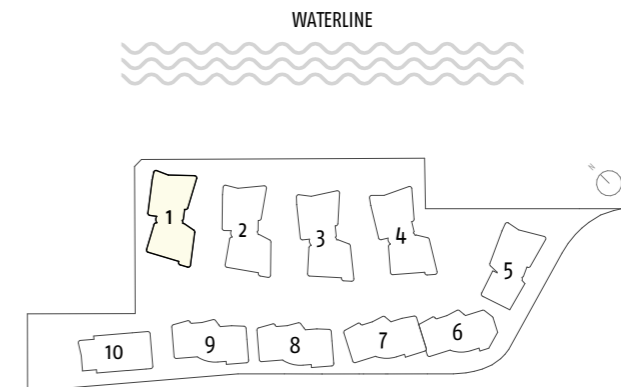
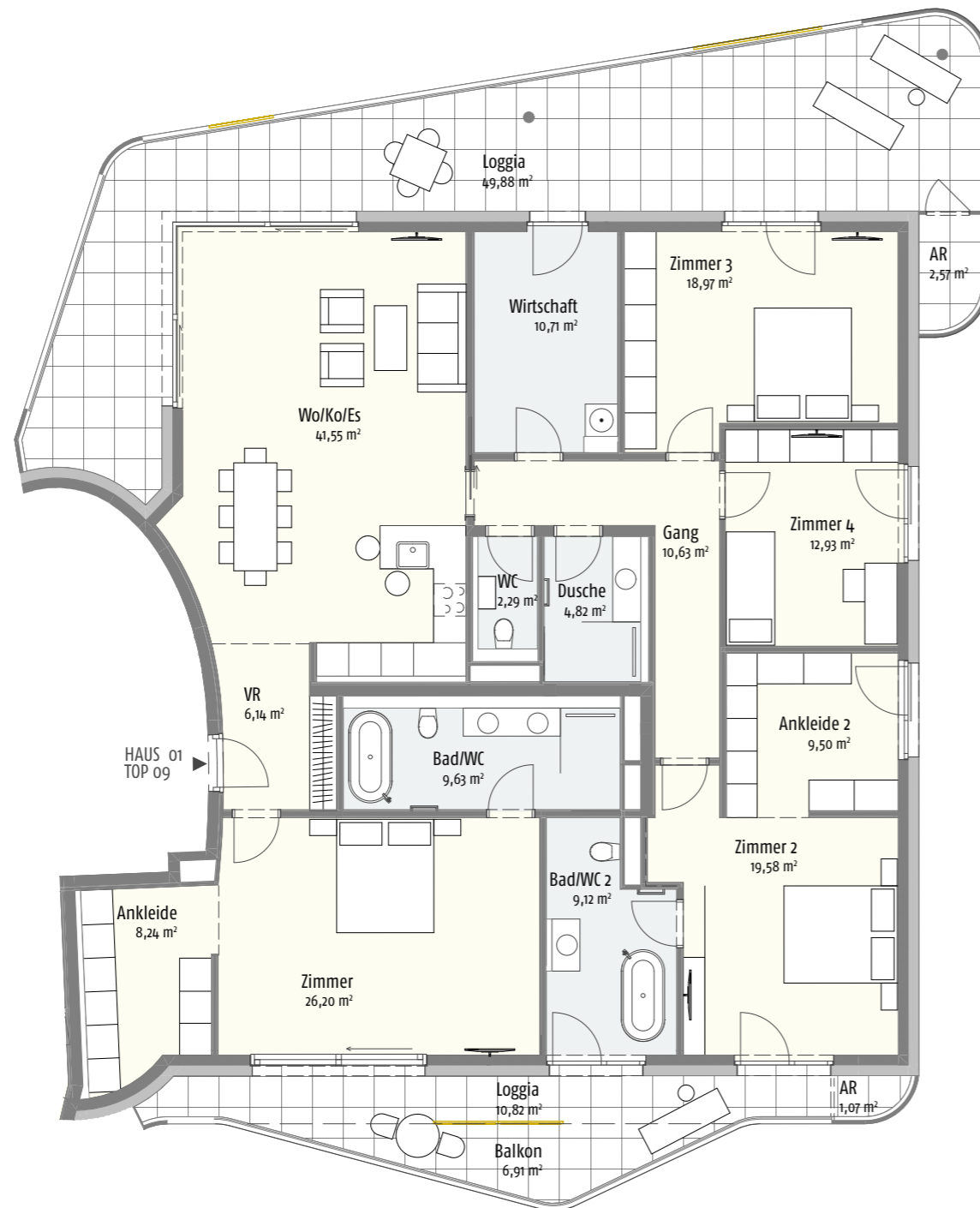


## KUCHELAUER HAFENSTRASSE 98 HAUS 01 | TOP 09 | 2. OBERGESCHOSS



HAUS 01



FASSADENANSICHT

Wohnfläche:	190,31 m <sup>2</sup>
Loggia + AR:	64,34 m <sup>2</sup>
NNF:	254,65 m <sup>2</sup>
Keller:	15,76 m <sup>2</sup>
Balkon	6,91 m <sup>2</sup>